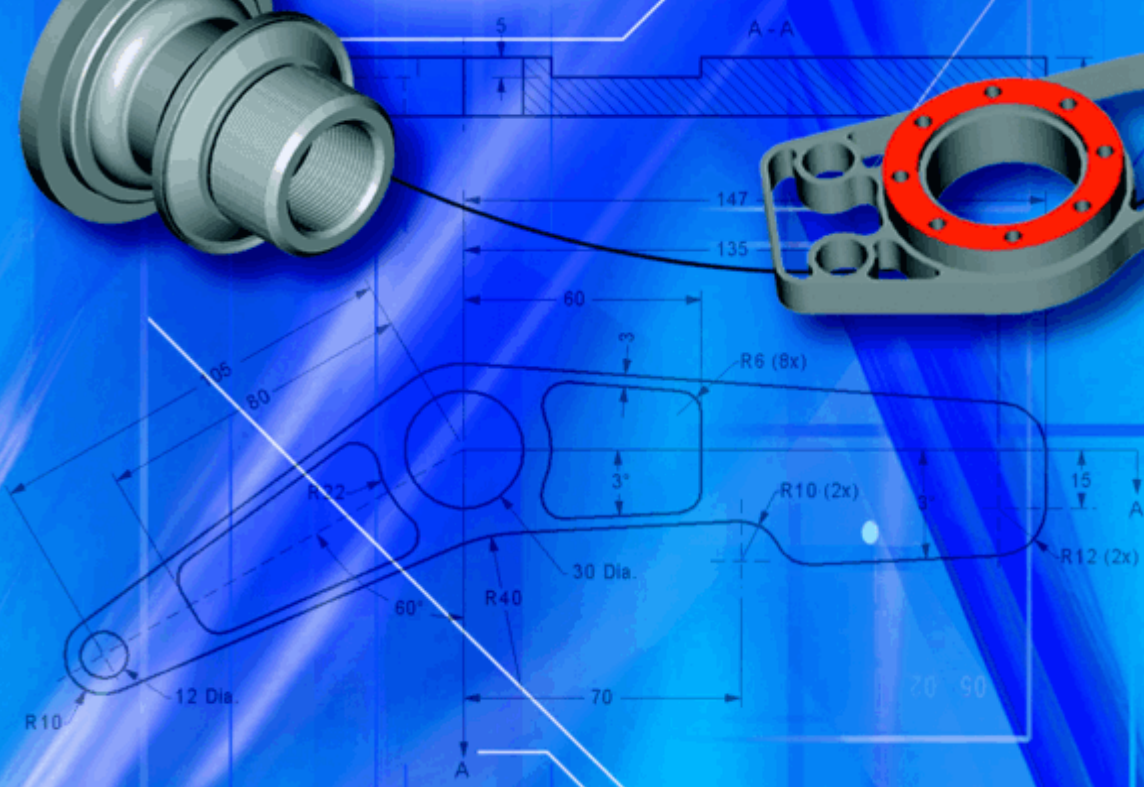
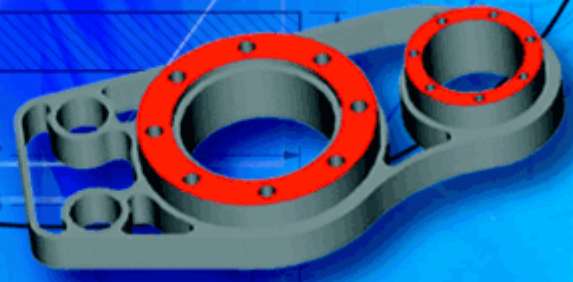


ESCAM[®]

CAD/CAM

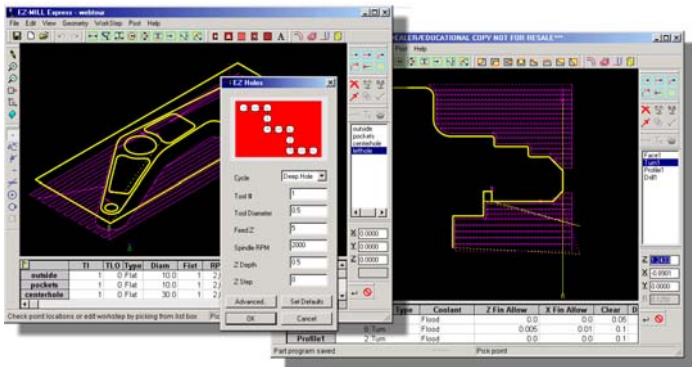


CNC Programming Simplified . . .

EZ-MILL Express & EZ-TURN Express

The EZ-CAM Express family of products offers an integrated design and 2-axis machining system at an affordable price. These streamlined applications are packed with over twenty years of G-code programming experience and CNC know-how, and contain all the essential features of the standard EZ-CAM products. The powerful geometry construction tools are easy to learn and use, and multiple import/export options including DXF and IGES allow existing CAD systems to be readily companioned.

EZ-CAM Express, it's a great way to start programming... today !



- Infinite/Finite Length Geometry Creation
- IGES, DXF, DWG Import and Export
- Dimensioning and Text Annotations
- Simplified and feature optimized Dialogs
- Integrated Machining Parameter Spreadsheet
- Instant editing/updating of Machining Parameters
- Cut/Copy/Paste/Mask Machining Worksteps
- 2D & 3D centerline toolpath Verification
- Step and Speed Control for Verification
- Library of over 100 CNC Postprocessors

MILL-Express

- Pocketing and Zig-Zag with Unlimited Islands
- Multiple Pass Contouring w/Stock Allowance
- Facing with unlimited Bosses
- Drilling, Boring, Pecking and Tapping Cycles
- Integrated Letter & Number Engraving
- Bolt Circle & Hole Array Wizards

TURN-Express

- Turn, Bore and Face Roughing Cycles
- Multiple Pass Contouring w/Stock Allowance
- Groove, Thread and Drilling Cycles

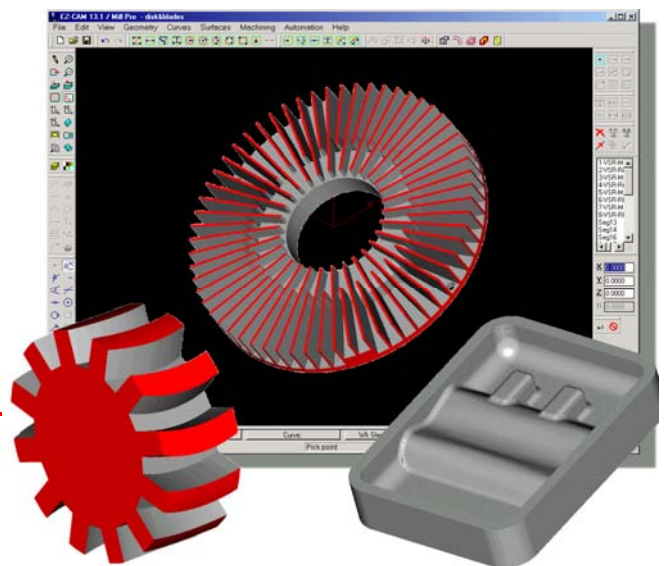
EZ-MILL

EZ-MILL is a full featured milling system containing many advanced capabilities normally associated with more expensive systems. It includes all the EZ-MILL Express functionality plus Gears/Splines/Cams Geometry Creation, 2,5D milling operations applied to imported solid models, 4th axis indexing/wrapping and a 3D profiling cycle. Also included is the Optimize Curve command to simplify curves by fitting tangent arcs to polyline segments. Robust data translators allow part models to be imported from virtually any CAD system, and powerful geometry extraction tools make prismatic machining from 3D data a simple task. EZ-CAM's unique integrated spreadsheet enables you to view all operation parameters at a glance, and the associative toolpath generation allows you to update your toolpaths with just a single click.

EZ-MILL, all the functionality you need at a great price!

EZ-MILL Pro

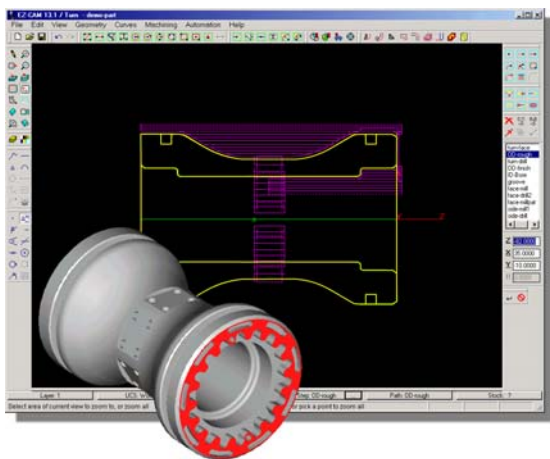
EZ-MILL Pro extends the standard EZ-MILL capabilities to meet the demanding needs of the prototype, tooling, die and mold professional. EZ-MILL Pro includes all the functionality of EZ-MILL plus surface creation and machining capabilities. 3D Surface Machining Wizard combines 12 different Roughing, Re-Roughing and Finishing strategies under a new and simple-to-use dialog box.



CNC Programming Simplified . . .

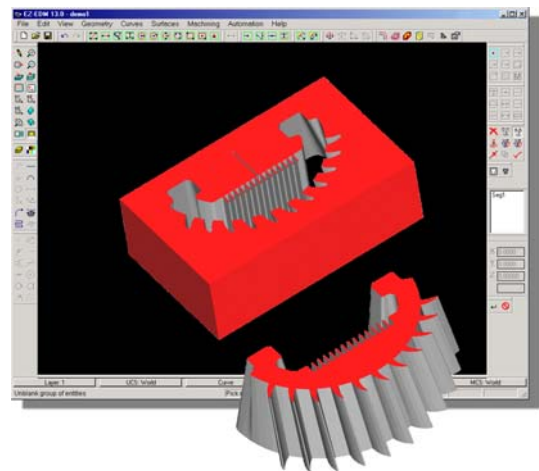
EZ-TURN

EZ-TURN is an advanced turning and integrated Turn / Mill programming system designed to allow both turning and milling operations to be defined directly from 3D data in one seamless environment. Turning profiles can be defined by slicing through the axis of an imported model and milling path geometry can be extracted directly from model features. Robust custom stock roughing, multi pass profiling, threading, grooving, drilling, cut-off, and bar pull operations handle the toughest turning requirements. EZ-TURN also supports multiple spindles, turrets, and coordinate systems. Canned cycles can be used to increase efficiency and reduce program length. Fully integrated milling capabilities support both C and Y axis configurations and allow standard 2.5 axis milling operations to be performed on the face or wrapped around a specified diameter. Advanced verification displays both turning and milling together in a single environment, ensuring that any mistakes are caught before they reach the shop floor.



EZ-EDM

EZ-EDM is a sophisticated 2 through 5 axis wire EDM system that can handle even the most difficult applications. Included are automatic machining strategies such as multi-pass contouring with stop, retract and cutoff options, and no-core-cut pocketing. The newly developed Punch and Die features help reduce workload by combining all task related operations into simplified and user-friendly dialogs. Convenient auto male/female part recognition plus access to every single wire movement via the motion record provides full control of taper and wire compensation registers at all times. The proven geometry interface now imports solids and surface models via IGES and STL. Extensive 3D surface creation and editing functions like the new Extract Cross Section command drastically ease the task of creating the Machining curves.



EZ-MILL

- Mill-Express Functionality
- 2,5D milling on imported solid models
- Cam, Gear, and Spline Generation
- 4'th Axis Wrapping
- 4'th and 5'th Axis Indexing
- 3D Solid Model Simulation
- Feedrate Optimization
- Visual Basic Scripting Language
- Thread Milling
- Post Processor Editing Utility

EZ-MILL Pro

- Advanced Surface Creation (Coons)
- Advanced Surface Editing
- 3D Surface Machining Wizard
- Roughing, Re-Roughing, Finish methods

EZ-TURN

- TURN-Express Functionality
- Multiple User Coordinate Systems
- Automatic Undercut Detection
- Live Tool with C & Y axis Support
- Custom Shape Milling Cycle
- Face & Side Pattern Drilling Cycles
- Barpull and Cutoff Cycles
- Canned Cycle support for Roughing
- Custom Stock Roughing
- Tool Library Management System
- Verification incl. Toolholder Display
- 3D Solid Model Simulation
- Visual Basic Scripting Language
- Post Processor Editing Utility

EZ-EDM

- EZ-CAM Geometry Interface
- Surface Creation & Editing
- IGES and STL Solids Import
- Intersection Curve Calculation
- Multi-Pass Contouring w/Taper
- 4 Axis Contouring
- Pocketing (Contr. Parallel, Zig-Zag)
- Formtool Cycle
- ISO Radius & Sharp Corner Control
- Cutting Technology Database
- Advanced PUNCH and DIE Features
- 3D Solid Model Simulation
- Visual Basic Scripting Language
- Post Processor Editing Utility

EZCAM SOLUTIONS Inc.

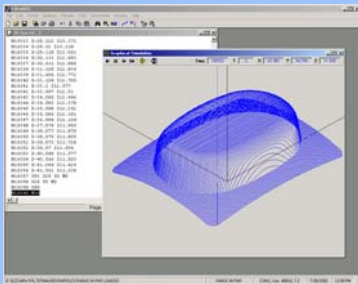
Who We Are

EZCAM Solutions Inc. is the developer of EZ-CAM's family of CAD/CAM software systems, originally created by Bridgeport Machines in 1980. Based on its ease of use, leading-edge programming technology, and innovative machining strategies, EZ-CAM has helped over 10,000 users worldwide.

OTHER EZ-CAM MODULES AVAILABLE

FilterMAX

FilterMAX is a toolpath optimization utility that converts point-to-point G-code tool paths to tangent arc moves or NURBS, resulting in files that are up to 98% shorter. Instead of cutting thousands of linear segments, the machine will cut tangent arcs, resulting in smoother surface finishes. Small linear moves can slow down a CNC control's processing time. FilterMAX eliminates this delay, allowing the machine to run much faster. In addition feedrate optimization for sharp corner deceleration can be applied. Finally the optimized code can be graphically verified one move at a time or all at once in the preview window.



TextCAM

TextCAM is an easy to use stand-alone CNC engraving software package. You can create machinable text from a variety of fonts within TextCAM, or import other artwork from art programs such as CorelDraw or Adobe Illustrator. With two clicks of mouse TextCAM converts your art into a DXF format. TextCAM then provides smooth continuous tool paths, no matter how many tight turns the letters may have. By using tangent arcs the CNC programs are as short as possible while maintaining a high degree of accuracy.



- Software available to all CNC Machine users
- Upgrades available for all existing EZC-CAM users
- Technical support by telephone/email/internet
- Training by experienced staff

Dealer Info

Product Comparison Chart

	Mill Express	Mill	Mill Pro	Turn Express	Turn	EDM
Import / Export DXF / DWG / IGES	✓	✓	✓	✓	✓	✓
Import STEP/ACIS/PARASOLID/VDAFS/STL		✓	✓		✓	✓
Import SOLIDWORKS/RHINOCEROS		✓	✓		✓	✓
Wireframe Geometry Creation and Editing	✓	✓	✓	✓	✓	✓
Basic Dimensioning	✓	✓	✓	✓	✓	✓
Basic Engraving	✓	✓	✓			
Gears / Splines / Cams Geometry Creation		✓	✓		✓	✓
Multiple Layers and Colors		✓	✓		✓	✓
Multiple Construction & Machining Coordinate Systems		✓	✓		✓	✓
Silhouette Boundary Curve Creation			✓			
Advanced Surface Creation and Editing			✓			✓
Copy/Paste from Rhino (Solids Modeling & Design)		✓	✓		✓	✓
Single and Multi-pass Profiling	✓	✓	✓	✓	✓	✓
3D Profiling		✓	✓		✓	
Thread Milling	✓	✓	✓			
ZigZag Pocketing	✓	✓	✓		✓	✓
Offset Pocketing	✓	✓	✓		✓	✓
XYUV - Form Tool - Punch & Die Cycles						✓
Tapered Tool & Wall Support	✓	✓	✓		✓	
Standard Holemaking Canned Cycle Support	✓	✓	✓		✓	
Rotary Axis Indexing (4th & 5th Axis)		✓	✓		✓	
Rotary Axis Wrapping		✓	✓		✓	
Equidistant Finishing			✓			
Automatic Constant Z Re-Roughing			✓			
Multi Surface Projection Machining			✓			
Constant Z Roughing			✓			
Constant Z Finishing			✓			
Rough Turning/Facing/Boring from Cylindrical Stock				✓	✓	
Rough Turning/Facing/Boring from Custom Stock					✓	
Canned Cycle Roughing Support				✓	✓	
Custom Auxiliary & Bar Pull & Cut-Off Cycles					✓	
Drilling/Threading/Grooving - Long Hand & Canned Cycle				✓	✓	
Toolpath Repetitions - Translate/Rotate/Mirror	✓	✓	✓			✓
Graphic Toolpath Verification Plotting	✓	✓	✓	✓	✓	✓
Solid Simulation Toolpath Verification	✓	✓	✓	✓	✓	✓
Dynamic Viewing Controls		✓	✓		✓	✓
Tool Library	✓	✓	✓	✓	✓	✓
Material Library	✓	✓	✓			
Integrated Spreadsheet Operations Manager	✓	✓	✓	✓	✓	✓
Library of Posts	✓	✓	✓	✓	✓	✓
Post Processor Editor	✓	✓	✓	✓	✓	✓
Visual Basic Automation Interface		✓	✓		✓	✓

EZCAM Solutions Inc, 235 E. 83 Street Suite:7H, New York, NY 10028 - USA
 Phone: 212 452 2460 Fax: 212 937 3197
www.ezcam.com
 mailto: info@ezcam.com